

HILTI DUST CONTROL PRODUCTS AND SOLUTIONS CONT.

Transform the way you work

THREE WAYS TO COMPLY WITH OSHA SILICA DUST REGULATIONS

OSHA Table 1

Choose a pre-determined option based on your application, from OSHA Table 1 — Exposure Control Methods For Silica Dust

Objective data or performance testing

Utilize third-party performance or objective data to document that workers performing a particular application are in compliance with the permissible exposure limit of $\leq 50 \mu\text{g}/\text{m}^3$ averaged over an eight hour day. Call Hilti for this data for certain systems.

Scheduled air monitoring

Periodically test for a particular application to validate if the user falls under the permissible exposure limit of $\leq 50 \mu\text{g}/\text{m}^3$.

Learn more about how to comply with the new OSHA silica dust regulations and register for a webinar here: <http://hilti.link/SilicaDustKnowledgeCenter>

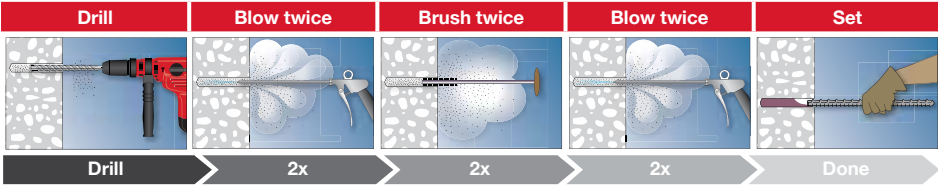
For questions please email: silicadustquestions@hilti.com

SAFESET TECHNOLOGY

THE TRADITIONAL METHOD

Blow and brush

Before the new OSHA silica dust regulations were implemented, one option to improve the performance of your adhesive anchors was to use your current hole cleaning method while substituting HIT-HY 200 and HIT-RE 500 V3 for your current adhesive product. When used with a Hilti shroud and Hilti vacuum, these applications are Table 1 compliant.*



HOLES THAT CLEAN THEMSELVES

Hollow drill bits

Hilti TE-CD and TE-YD Hollow Drill Bits, in conjunction with HIT-HY 200, or HIT-RE 500 V3, and the Hilti VC 20/40 Vacuum System make subsequent hole cleaning completely unnecessary. Dust is removed by the Vacuum System while drilling is in progress for faster holes and a virtually dustless working environment. Hilti's SafeSet™ Technology system allows you to avoid any hole cleaning, which improves productivity by up to 60%, and would otherwise require a HEPA vacuum to collect the airborne dust.*



HILTI

Hilti, Inc. (U.S.) 1-800-879-8000
en español 1-800-879-5000 www.hilti.com



OSHA SILICA DUST REGULATIONS

Clearing the air on the new OSHA respirable crystalline silica dust regulation



HILTI DUST CONTROL PRODUCTS AND SOLUTIONS

Here at Hilti, we are committed to helping you reduce dust exposure, increase productivity and comply with the new OSHA 1926.1153 regulations. Our dust collection systems allow you to customize a solution to maximize productivity and efficiency.

See our product offerings for dust collection and reduction.

Visit <http://hilti.link/drs> for more information on solutions.



1 Universal vacuum cleaners

Our innovative line of vacuums help control dust thanks to:

- 99% filter efficiency
- HEPA ready
- Self-cleaning filter
- COMING SOON — Up to 300 CFM

2 Concrete grinding

Hilti grinding hoods and vacuums work together to greatly reduce respirable dust. Check the CFM rating on your vacuum.

3 Concrete chiseling

Hilti breakers combined with a Hilti shroud and a Hilti vacuum are Table 1 compliant.

8 Dry concrete cutting

Use a Hilti vacuum to help control dust with this application. Check the CFM rating on your vacuum, and check Table 1 to verify compliance.

5 SDS+ and SDS-Max drilling

When used with a Hilti shroud and Hilti vacuum, these applications are Table 1 compliant. For anchoring applications, use Hilti's SafeSet™ Technology system to avoid any manual hole cleaning, which will otherwise require a HEPA-filtered vacuum to collect the airborne dust.

6 Concrete coring

Any Hilti rig-mounted core drill with a water delivery system is Table 1 compliant.

7 Concrete cutting with water

Hilti gas saws are Table 1 compliant when used with a water delivery system.

4 Direct fastening

Utilize methods like Hilti gas-, powder-, or battery-actuated fastening to minimize the need for drilling in a simple one-step solution.

References to Table 1 refer to OSHA 1926.1153

CUSTOMERS HAVE OPTIONS

Dust Removal Systems

Visit <http://hilti.link/SilicaDustKnowledgeCenter> for an interactive chart or to download this chart as a PDF.



Products — Find your tool and accessory below, and then use with any Hilti vacuum. Note that certain solutions have a CFM requirement noted under the tool nomenclature											OSHA 29 CFR 1926.1153 compliance	
Application	Tools with DRS						Dust removal accessory		Universal vacuum cleaners	Table 1 Compliant ¹	Data available	
SDS+ drilling / chiseling	Rotary hammer TE 2 	Rotary hammer TE 3-C 	Rotary hammer TE 7-C 	Combi-hammer TE 30-C 	Rotary hammer TE 4-A 	Rotary hammer TE 6-A 	Cordless combihammer TE 30-A 	Hammer drill bit TE-CD 	Dust removal system DRS-S Item number 340602 	VC 125 Vacuums VC 125-6 Item number 2167148 	✓	
	Rotary hammer TE 4-A 						Rotary hammer TE 6-A 		Hammer drill bit TE-CD 	Dust removal system DRS 4-A³ (use with TE 4-A) Item number 2177080 	VC 125-9 Item number 2167149 	✓
	Item number 3482498						Item number 3551238		SAFE-ET	Dust removal system DRS 6-A³ (use with TE 6-A) Item number 2172902 		✓
									SAFE-ET			
SDS-max drilling / chiseling	Combihammer TE 50 	Combihammer TE 60-AVR 	Combihammer TE 60-ATC 	Combihammer TE 70 	Combihammer TE 70-ATC 	Combihammer TE 80 	Hammer drill bit TE-YD 	Dust removal system TE DRS-Y 	VC 150 X Vacuums VC 150-6 X Item number 2167146 	✓		
	Item number 3553052	Item number 3564151	Item number 3564152	Item number 3514170	Item number 3514171	Item number 2083438		OR	Item number 2055718			
Concrete breaking	Breaker TE 500-AVR 	Breaker TE 700-AVR 	Breaker TE 800-AVR 	Breaker TE 1000-AVR 	Breaker TE 1500-AVR 	Dust removal system DRS-B 		Item number 365944		VC 150-10 X Item number 2167147 	✓	
	Breaker TE 3000-AVR 					Item number 3492616		TE DRS 3000 		Item number 2171779	✓	
Concrete cutting and grinding	Angle grinder AG 450-S Table 1 vacuum requirement: 112.5 cfm 			Angle grinder AG 450-D Table 1 vacuum requirement: 112.5 cfm 			Cutting hood 	Grinding hood 	VC 150-10 XE Item number 3563661 	✓		
	Item number 2075613			Item number 2075614			Item number 2101312	Item number 2102983				
	5" Angle grinder AG 500-12D Table 1 vacuum requirement: 125 cfm 			5" Angle grinder AG 500-11S Table 1 vacuum requirement: 125 cfm 			Tuck pointing/ cutting 	Grinding 	Slitting 	Item number 267720	✓	
	Item number 3564653			Item number 3564654			Item number 284978	Item number 2126539				
	Diamond grinder DG 150 Table 1 vacuum requirement: 150 cfm 					Item number 369388		Vacuum hose adapter 		Item number 281862	VC 300 Vacuum VC 300-17 X Item number 3563662 	✓
	Item number 369388											
	Diamond cutter DCH 230 Table 1 vacuum requirement: 225 cfm ⁴ 			Diamond cutter DCH 300 Table 1 vacuum requirement: 300 cfm ⁴ 			Depth gauge DCH 230 	Depth gauge DCH 300 	Item number 212131	Item number 212187	✓	
	Item number 3444488			Item number 3444489							✓	
Concrete sawing	Hand-held gas saw DSH 700-X 			Hand-held gas saw DSH 900-X 			DWP 10 tank (water is needed) 		DSH-P 	Item number 2124505	✓	
	14" Item number 2121540			16" Item number 2121542			Item number 365595					
Concrete coring ^{1,2}	Diamond coring tool DD EC-1 	Diamond coring tool DD 120 	Diamond coring tool DD 150-U 	Diamond coring tool DD 160-U 	Diamond coring tool DD 250 	Diamond coring tool 350-CA 	Diamond coring tool DD 500-CA 	DWP 10 tank (water is needed) 	Item number 365595	✓ ¹		
	Item number 336737	Item number 274935	Item number 3483076	Item number 3496301	Item number 3550349	Item number 3536957	Item number 3536965					
	Diamond coring tool DD 110-W 					Adapter 		DD-X LM 		Refer to vacuums listed above 	✓ ²	
	Item number 2087491					Item number 315826						
	Diamond coring tool DD 150-U 							DD-X LM 		Refer to vacuums listed above 	✓ ²	
Item number 3483121												

1 Table 1 engineering control method as specified in 29 CFR 1926.1153. Core drills under Table 1 (vi) "rig mounted core drills" are compliant when stand-mounted and used with a water delivery system.
2 Hilti interprets a core drill as also being a Table 1 (vii) "drill", and therefore DD 110 and DD 150 and/or other hand held core drills are compliant when used with a shroud and dust collection system.
3 The published item numbers here will provide table 1 compliant solutions. Previous generations will still need to utilize the objective data test report. Call Hilti for additional questions.
4 Hilti interprets these tools as large handheld angle grinders, which would therefore place them in table 1, section xii. These tools are table 1 complaint ONLY when used with the VC 300-17 X. However, you can use Hilti's objective data test report when using the VC 150 vacuums